

## Appendix B: Graphics







- Project Area
- County Boundary
- Current Extent
- Map Page
- Tree clearing within 100 ft of the roadway
- Tree clearing between 100 and 300 ft of the roadway
- Tree clearing greater than 300 ft from the roadway

0 200 400  
Feet

## Project Aerial Map: Tree Clearing Area

County Line Road Expansion  
Marion & Johnson Counties, Indiana

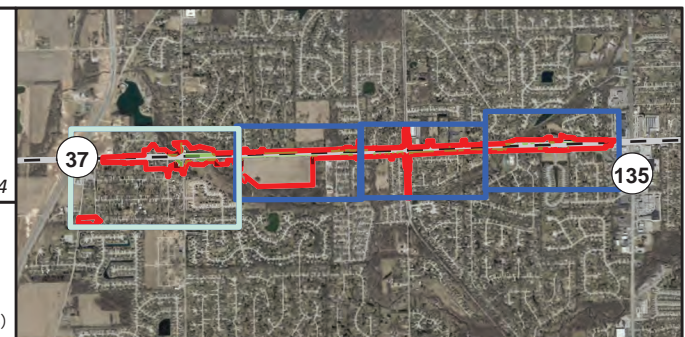
Map 1 of 4

Des. No. 2002553 et al

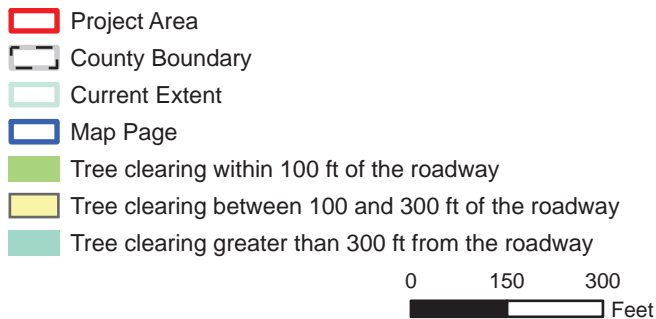
1 inch = 400 ft

**HNTB**

Graphics created by HNTB Corporation (2023)







# **Project Aerial Map: Tree Clearing Area**

County Line Road Expansion  
Marion & Johnson Counties, Indiana

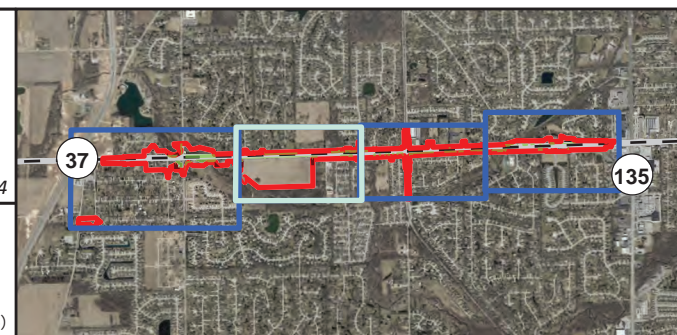
Map 2 of 4

Des. No. 2002553 et al

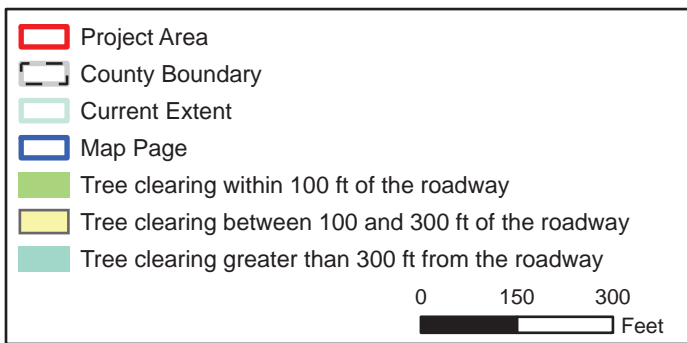
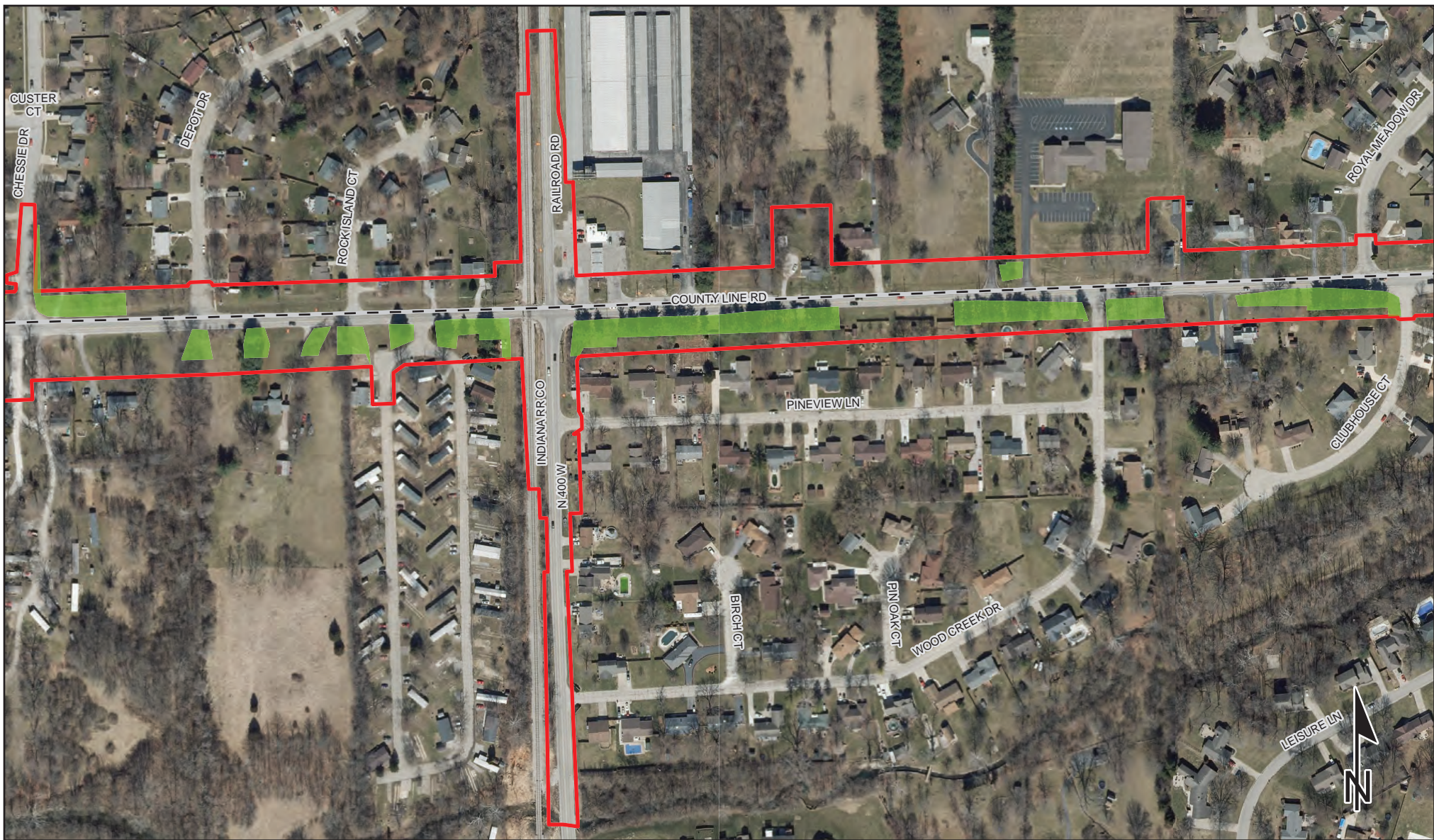
1 inch = 300 ft

**HNTB**

Graphics created by HNTB Corporation (2023)







### Project Aerial Map: Tree Clearing Area

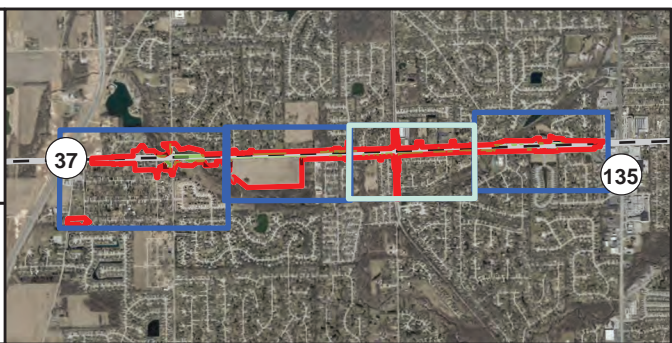
County Line Road Expansion  
Marion & Johnson Counties, Indiana

Des. No. 2002553 et al

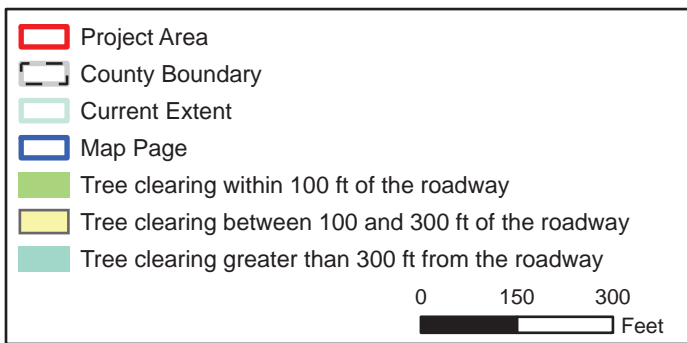
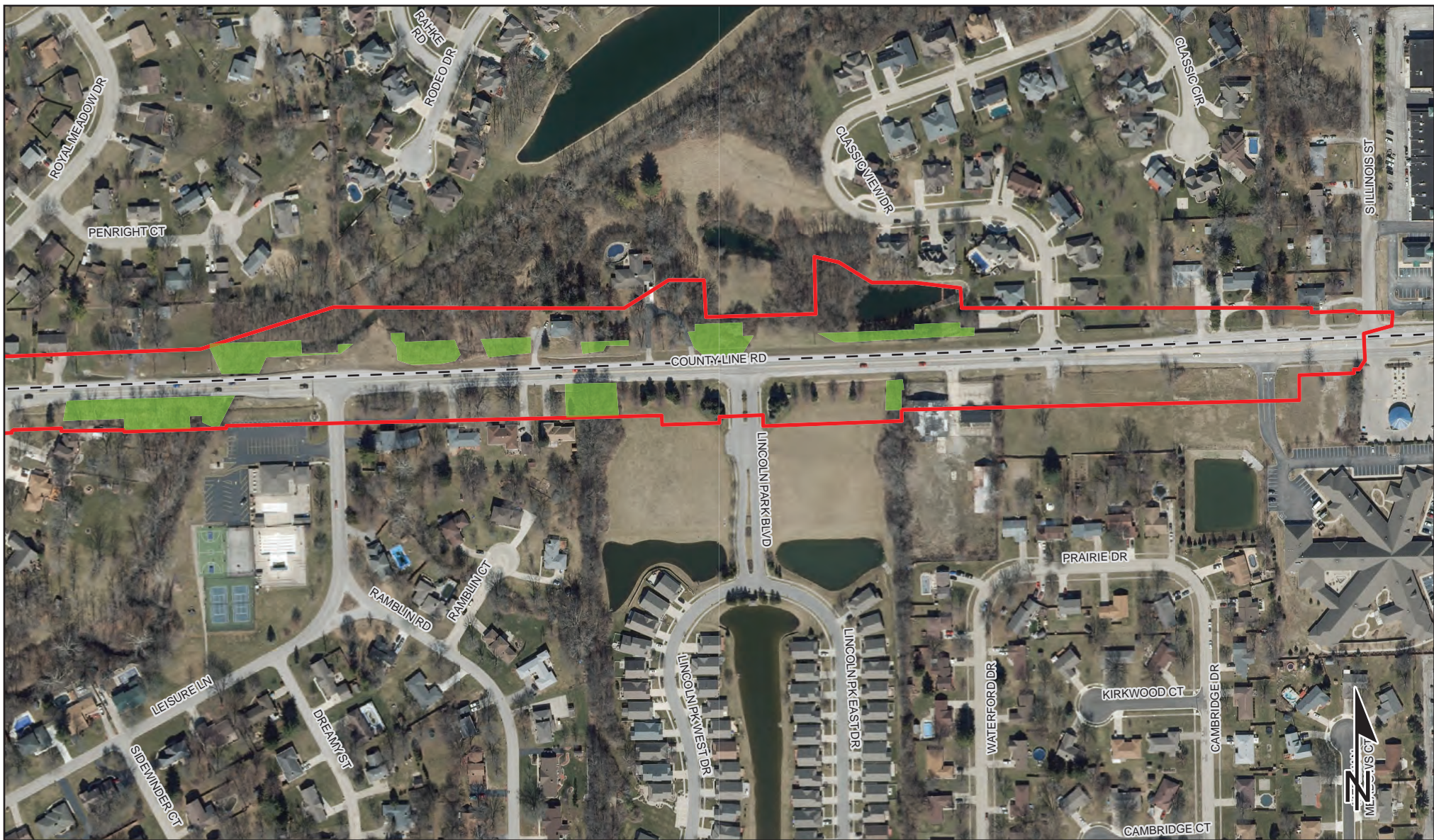
1 inch = 300 ft

Map 3 of 4

**HNTB**  
Graphics created by HNTB Corporation (2023)







**Project Aerial Map: Tree Clearing Area**

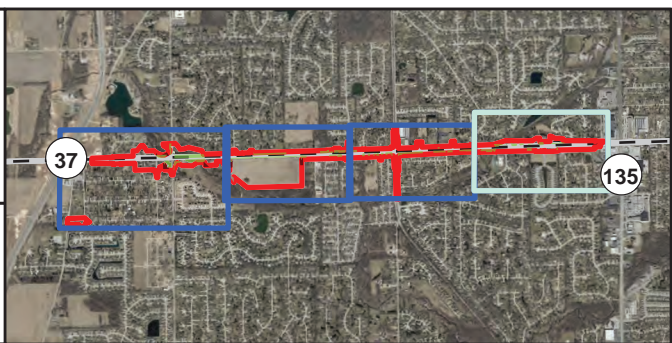
County Line Road Expansion  
Marion & Johnson Counties, Indiana

Des. No. 2002553 et al

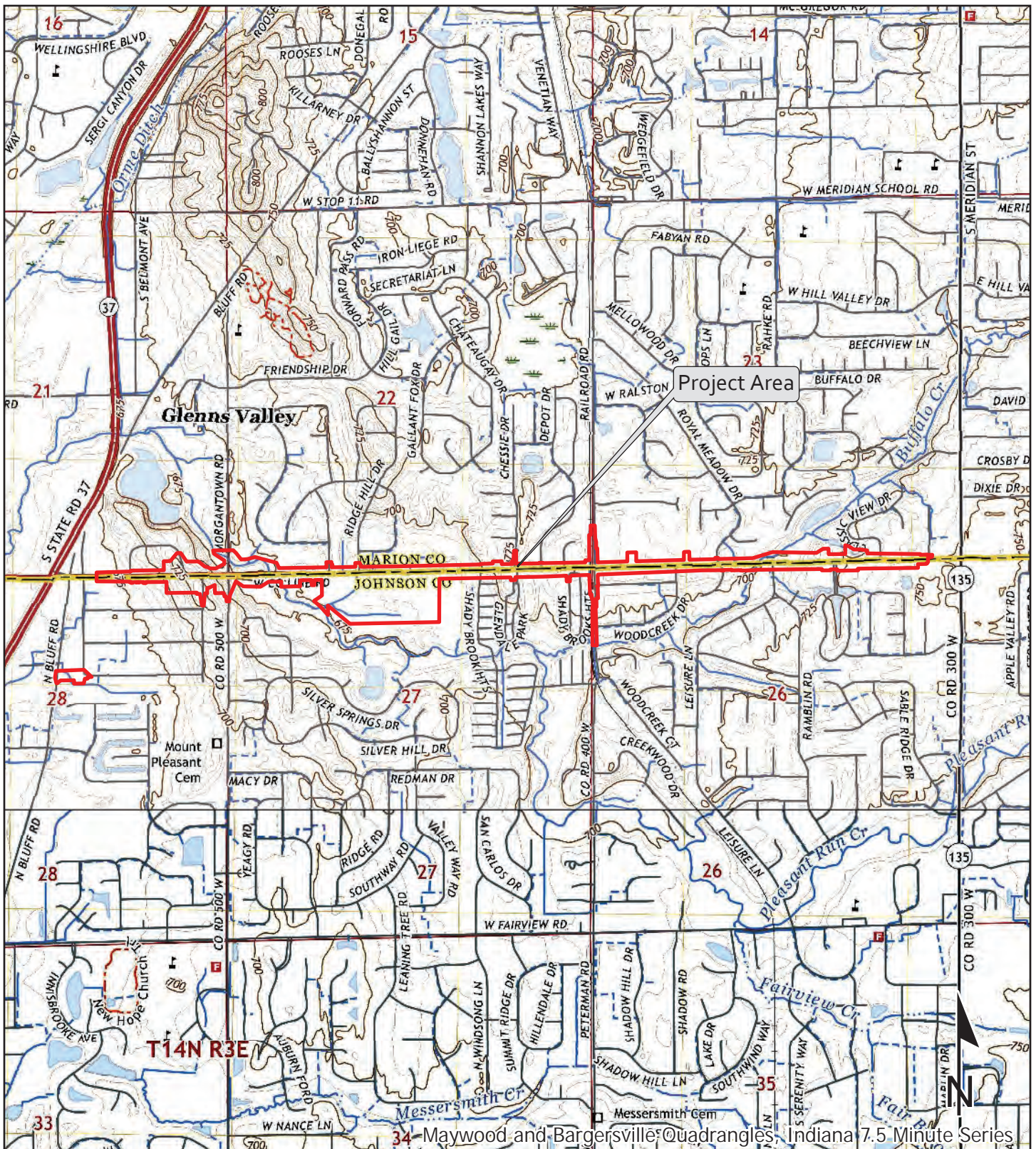
1 inch = 300 ft

**HNTB**  
Graphics created by HNTB Corporation (2023)

Map 4 of 4







Project Area

0 2,000  
Feet

## USGS (1:24,000 scale) Topographic Map

County Line Road Expansion  
Marion & Johnson Counties, Indiana

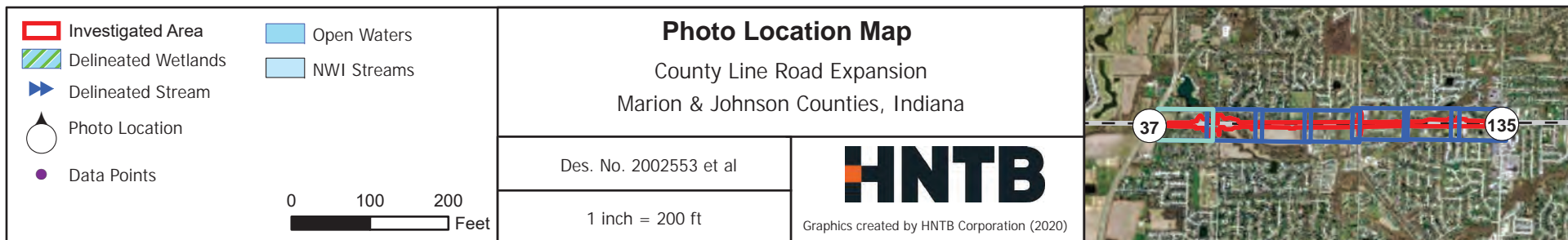
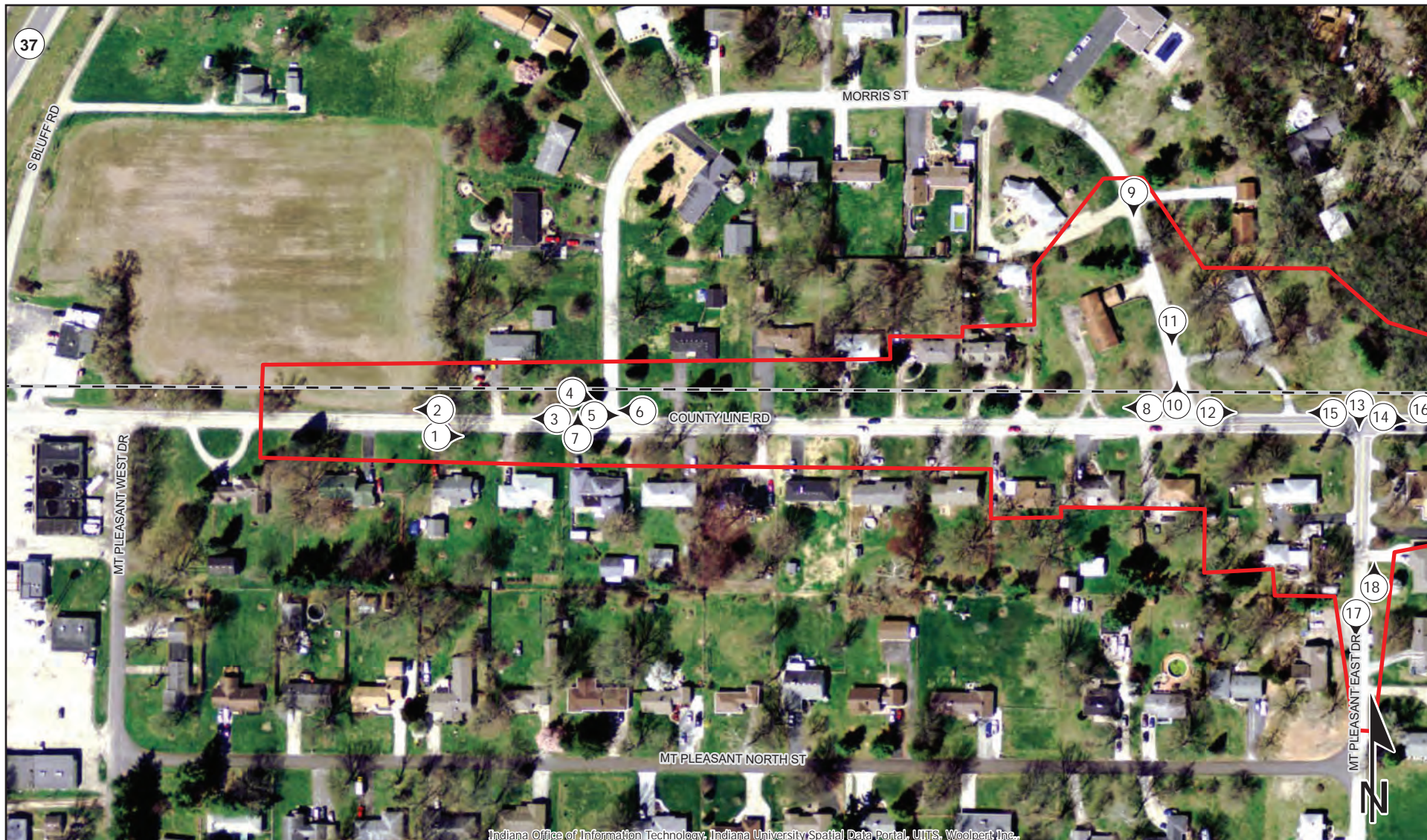
Des. No. 2002553 et al

1 inch = 2,000 ft

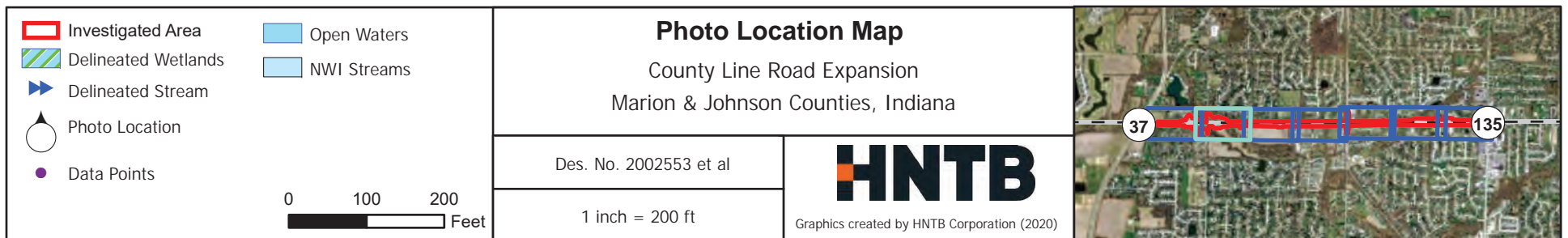
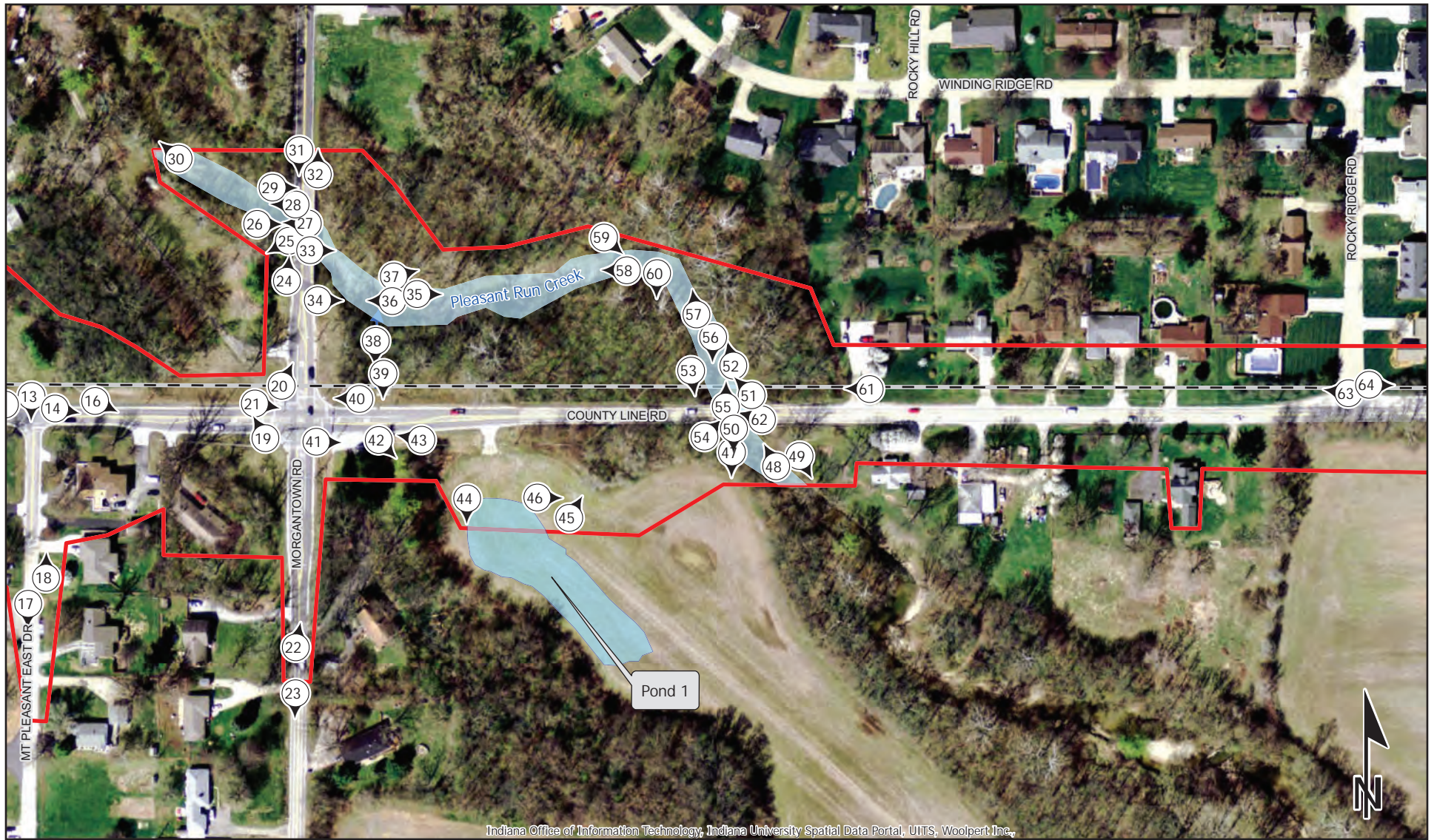
**HNTB**

Graphics created by HNTB Corporation (2023)





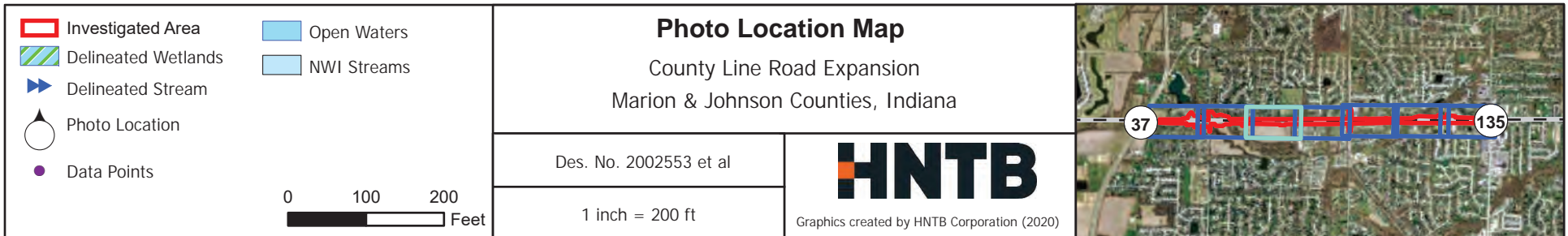




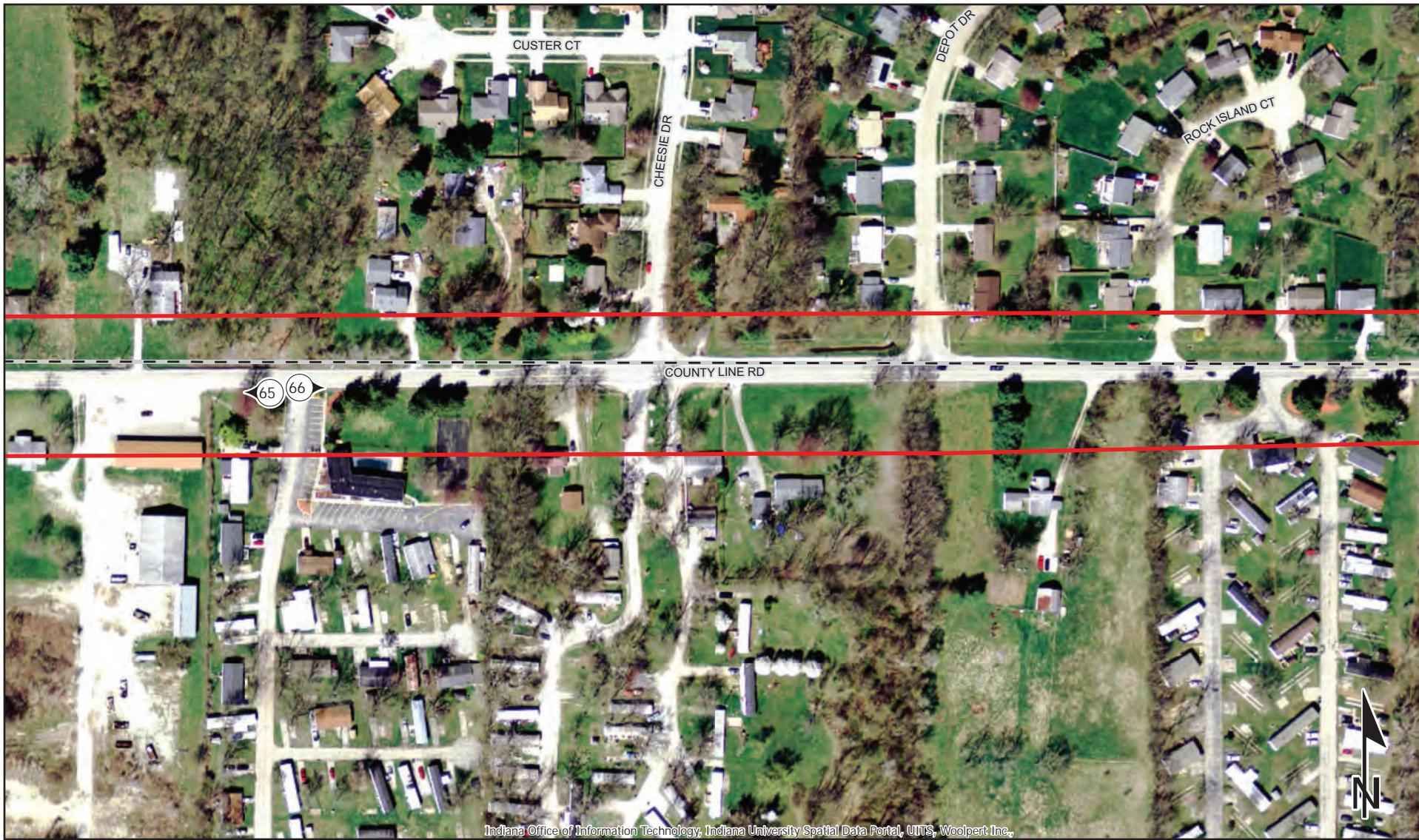




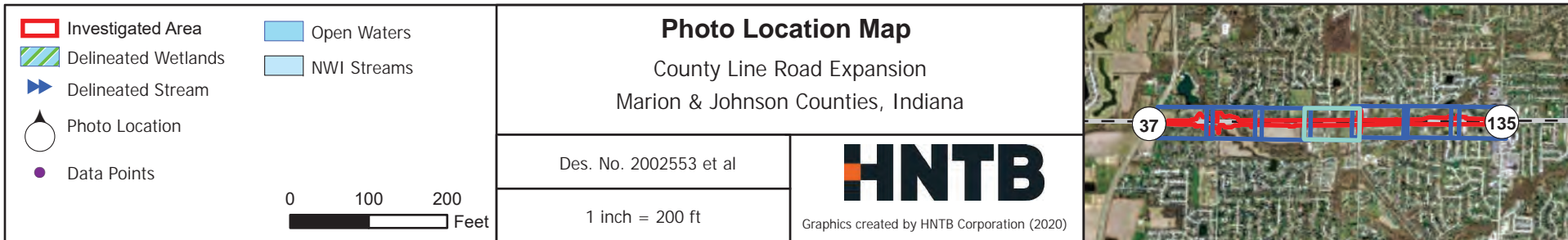
Indiana Office of Information Technology, Indiana University Spatial Data Portal, UITS, Woolpert Inc.,







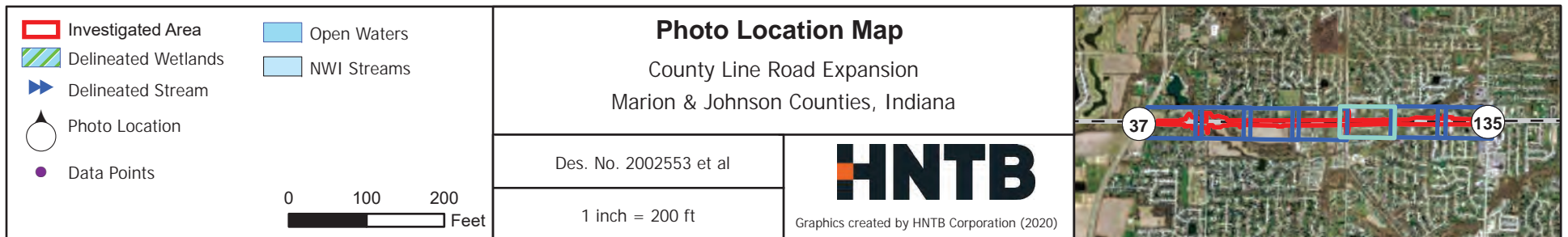
Indiana Office of Information Technology, Indiana University Spatial Data Portal, UITS, Woolpert Inc.,



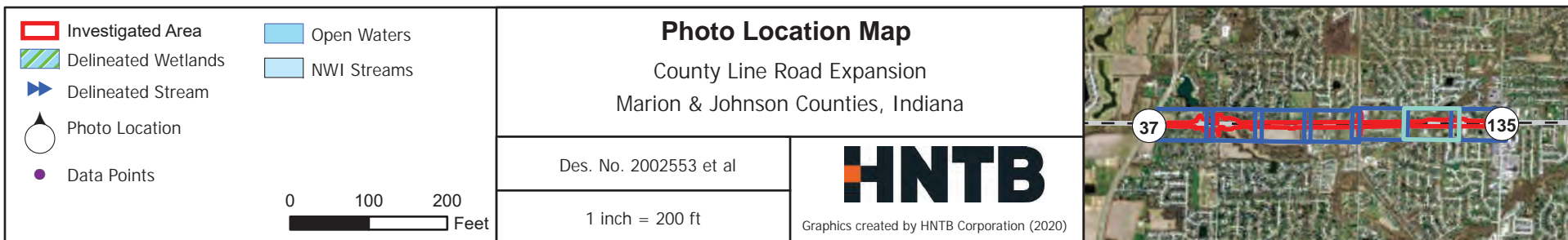
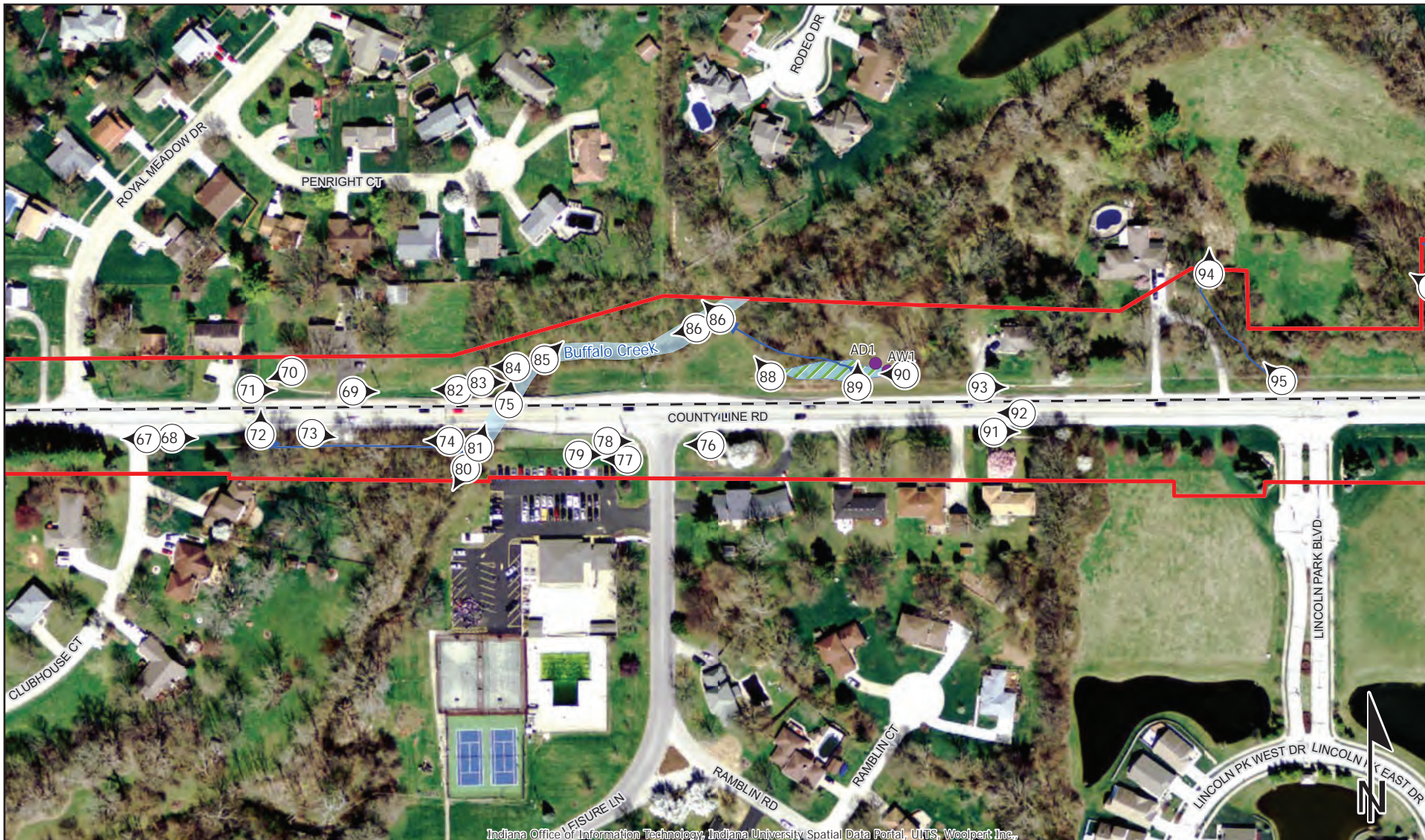




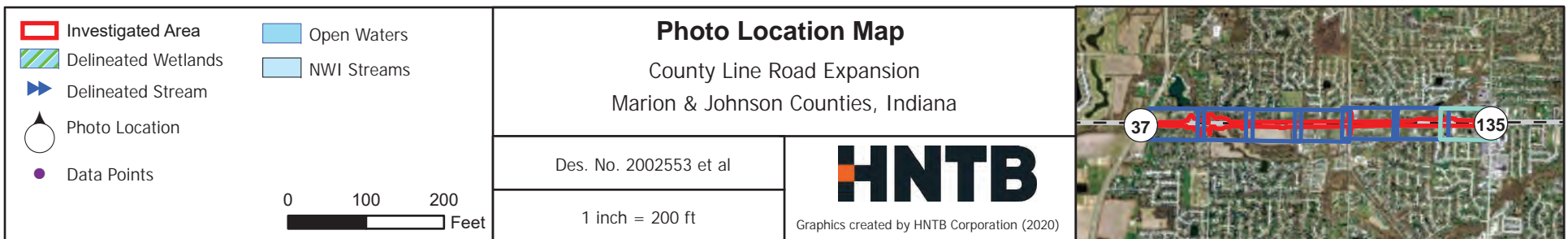
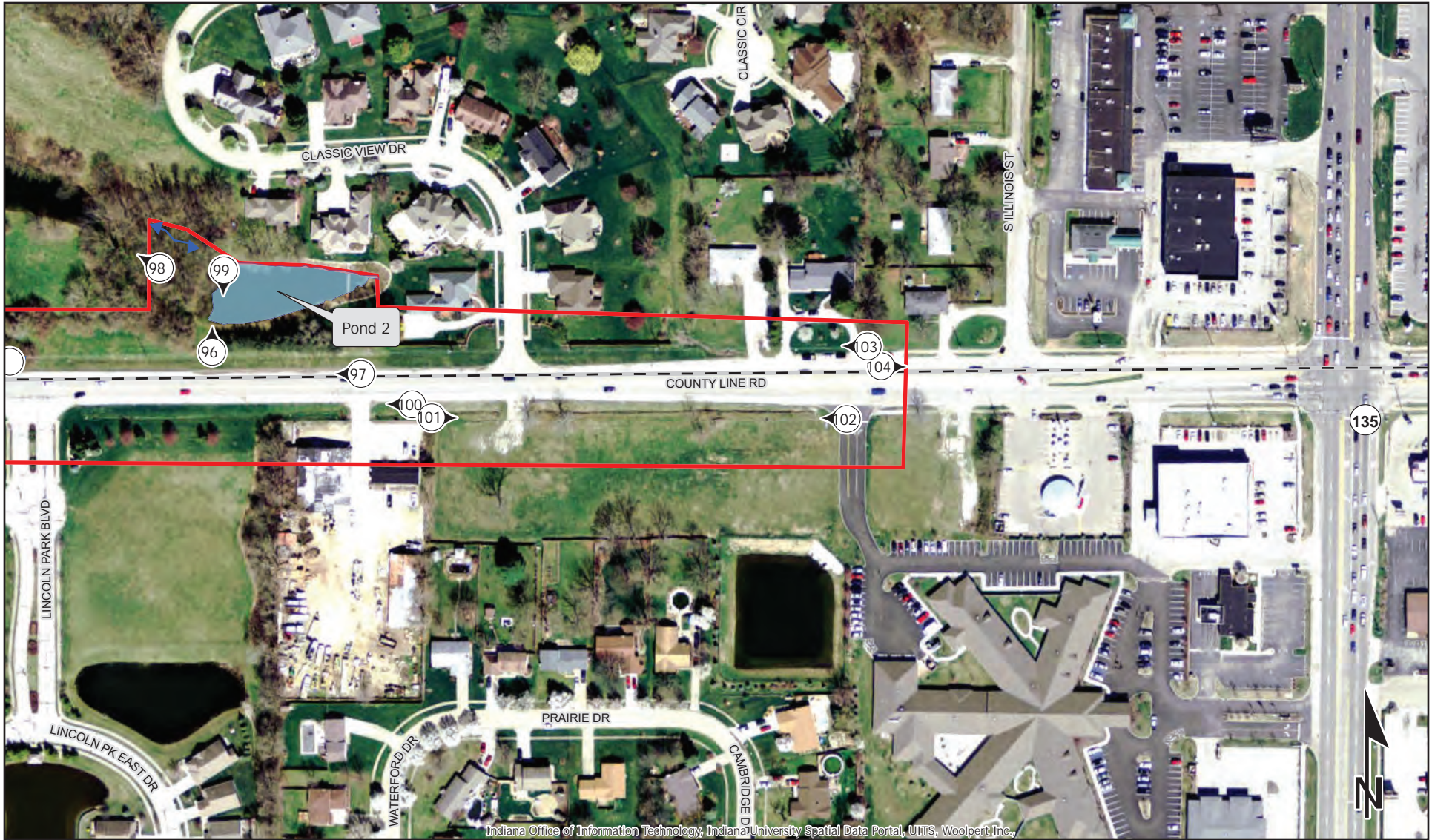
Indiana Office of Information Technology, Indiana University Spatial Data Portal, UITS, Woolpert Inc.















1. Looking east along County Line Road from west project end point



2. Looking west along County Line Road from west end of investigated area





3. Looking west along County Line Road from Morris Road



4. Looking east at drive culvert under Morris Road





5. Looking east along County Line Road from Morris Road



6. Looking west at drive culvert under Morris Road





7. Looking north along Morris Road from County Line Road



8. Looking west from Morris Road along the north side of the road





9. Looking south along Morris Road towards County Line Road



10. Looking north along Morris Drive





11. Looking south along Morris Road towards County Line Road



12. Looking east along County Line Road from the north side of Morris Road





13. Looking south down Mount Pleasant East Street



14. Looking east towards the intersection of County Line Road and CR 500 West





15. Looking west along County Line Road from Mount Pleasant East Street



16. Looking southeast towards the CR 500 West and County Line Road intersection





17. Looking south along Mount Pleasant East Street



18. Looking north along Mount Pleasant East Street towards County Line Road





19. Looking northwest at County Line Road approach to CR 500 West



20. Looking northeast at CR 500 West approach to County Line Road





21. Looking east at intersection of CR 500 West and County Line Road



22. Looking north towards County Line Road from CR 500 West





23. Looking south along CR 500 West



24. Looking north at Pleasant Run Creek





25. Looking southwest at roadside slope and riprap of bridge over Pleasant Run Creek



26. Looking east at Pleasant Run Creek





27. Looking west from under bridge over Pleasant Run Creek



28. Looking west downstream Pleasant Run Creek from Morgantown Road Bridge





29. Looking east at wildlife crossing under Morgantown Road Bridge



30. Looking northwest downstream Pleasant Run Creek





31. Looking south along Morgantown Road



32. Looking north along Morgantown Road from bridge





33. Looking east upstream Pleasant Run Creek from Morgantown Road Bridge



34. Looking east at Pleasant Run Creek under bridge





35. Looking east at log jam on Pleasant Run Creek upstream of bridge



36. Looking west downstream Pleasant Run Creek from east of Morgantown Road





37. Looking east upstream along Pleasant Run Creek



38. Looking south along UNT 1 to Pleasant Run Creek





39. Looking south at CMP under County Line Road at the head of UNT 1 to Pleasant Run Creek



40. Looking west at culvert north of County Line Road





41. Looking east at rip rap roadside ditch to drive culvert draining to UNT 1 to Pleasant Run Creek



42. Looking southeast to upstream end of culvert draining to UNT 1 to Pleasant Run Creek





43. Looking west to culvert to UNT 1 to Pleasant Run Creek on south side of County Line Road



44. Looking south to Pond 1





45. Looking northeast from hill east of Pond 1 towards field



46. Looking east from adjacent to Pond 1 south of County Line Road





47. Looking south at outfall of Pond 1 to Pleasant Run Creek



48. Looking northwest downstream towards County Line Road





49. Looking southeast upstream along Pleasant Run Creek



50. Looking south upstream Pleasant Run Creek from bridge





51. Looking northwest at west bank of Pleasant Run Creek and bridge



52. Looking north downstream Pleasant Run Creek





53. Looking south upstream Pleasant Run Creek



54. Looking northeast towards east bank of Pleasant Run Creek and roadside slope





55. Looking north downstream Pleasant Run Creek from County Line Road bridge



56. Looking south to bridge from Pleasant Run Creek





57. Looking north downstream Pleasant Run Creek



58. Looking west downstream Pleasant Run Creek





59. Looking southeast upstream along Pleasant Run Creek to bend



60. Looking south from bank of Pleasant Run Creek





61. Looking west at drive culvert



62. Looking west at nest under County Line Road bridge over Pleasant Run Creek





63. Looking west from Rocky Ridge Road



64. Looking east from Rocky Ridge Road





65. Looking west from Winter Brook



66. Looking east from Winter Brook





67. Looking west from Clubhouse Drive along County Line Road



68. Looking east along concrete lined roadside drainage from intersection of Clubhouse Ct. with County Line Road





69. Looking east along County Line Road over Buffalo Creek



70. Looking west at concrete ditch and culvert entrance





71. Looking east at concrete ditch to culvert



72. Looking north at culvert under County Line Road at head of RSD 1 to Buffalo Creek





73. Looking east down RSD 1 to Buffalo Creek



74. Looking west along RSD 1 to Buffalo Creek





75. Looking north upstream along Buffalo Creek from bridge



76. Looking west at inlet drainage to Buffalo Creek





77. Looking west towards Buffalo Creek



78. Looking east at inlet drainage to Buffalo Creek





79. Looking east along ditch to Buffalo Creek



80. Looking southwest downstream along Buffalo Creek towards end of riprap bed stabilization





81. Looking northeast upstream Buffalo Creek from riprap bed stabilization



82. Looking west along roadside draining to Buffalo Creek





83. Looking east downslope at Buffalo Creek



84. Looking west to pipe outfall to Buffalo Creek





85. Looking northeast along Buffalo Creek upstream from County Line Road bridge



86. Looking northwest at Buffalo Creek from UNT 1 to Buffalo Creek





87. Looking west down Buffalo Creek from the outfall of UNT 1 to Buffalo Creek



88. Looking northwest to pipeline on north side of County Line Road





89. Looking north into Wetland A



90. Looking west at Wetland A





91. Looking east at concrete roadside drainage



92. Looking west along concrete roadside drainage





93. Looking east along concrete lined roadside ditch



94. Looking north at UNT 2 to Buffalo Creek where it leaves the investigated area





95. Looking northwest towards two culverts draining to UNT 2 to Buffalo Creek



96. Looking north at Pond 2





97. Looking west along County Line Road



98. Looking northwest to emergency overflow from Pond 2





99. Looking south to outfall from Pond 2



100. Looking west at drive culvert





101. Looking east from roadside at drainage structure



102. Looking west along County Line Road ditch on southside from Greenwood Meadows





103. Looking west along County Line Road from Greenwood Meadows



104. Looking east along County Line Road toward State Road 135